

# MEDEX



MODULAR PROSTHETIC  
COMPONENTS

2023



1-888-886-2420

[www.medexinternational.com](http://www.medexinternational.com)

# SACH FOOT ADAPTERS

## Sach Foot Adapter

Connector between SACH Energy Storing Foot and pylon. Includes stainless steel M8-10 bolt, lock washer, and flat washer.



Part No	Alloy	Build Height	Weight	Max Patient Weight
<b>2A10</b>	Aluminum	12mm	106gr	136kg/300lbs
<b>2S10</b>	S. Steel	12mm	130gr	136kg/300lbs
<b>2T10</b>	Titanium	12mm	93gr	136kg/300lbs

Connector between SACH Energy Storing Foot and pylon. Includes stainless steel M8 (2T09) and M10 (2T/S/A10) bolt, lock washer, and flat washer.

Part No	Alloy	Build Height	Weight	Max Patient Weight
<b>2T09</b>	Titanium	12mm	80gr	100kg/220lbs

## Sach Foot Adapter (round)

Includes stainless steel M10 bolt, lock washer, and flat washer. Weight of the component includes stainless steel bolt and washers.



Part No	Alloy	Build Height	Weight	Max Patient Weight
<b>2T11</b>	Titanium	12mm	80gr	136kg/300lbs

# PYLONS

## Extra Long Pylon With Receiver

With 4 tilt adjustment set screws and 30mm anodized aluminum alloy tube (450 x 30 x 2.35mm).



Part No	Alloy	Weight	Max Patient Weight
<b>2S17</b>	S. Steel	385gr	136kg/300lbs
<b>2T17</b>	Titanium	343gr	136kg/300lbs

## Heavy Duty Pylon With Receiver

Rated for patients up to 450 lbs. With 4 tilt adjustment set screws and 34mm aluminum alloy tube (400 x 34 x 2.35mm).



Part No	Alloy	Weight	Max Patient Weight
<b>2T13</b>	Titanium	334gr	205kg/450lbs

## Long Pylon With Pyramid

30mm anodized aluminum alloy tube with pyramid (400 x 30 x 2.35mm).



Part No	Alloy	Weight	Max Patient Weight
<b>2T14</b>	Titanium	300gr	136kg/300lbs



### Long Pylon With Receiver

With 4 tilt adjustment set screws and 30mm anodized aluminum alloy tube (400 x 30 x 2.35mm).

Part No	Alloy	Weight	Max Patient Weight
<b>2A15</b>	Aluminum	308gr	100kg/220lbs
<b>2S15</b>	S. Steel	351gr	136kg/300lbs
<b>2T15</b>	Titanium	308gr	136kg/300lbs



### Low Profile Pylon with Receiver

Internally bonded adapter allows the tube clamp to get closer, reducing the length. With 4 tilt adjustment set screws and 30mm anodized aluminum alloy tube (400 x 30 x 2.35mm).



Part No	Alloy	Weight	Max Patient Weight
<b>2T12</b>	Titanium	313gr	136kg/300lbs

Warning: Do not shorten overall length to less than 55mm



### Receiver - Tube Unit

Includes four set screws.

Part No	Alloy	Weight	Max Patient Weight
<b>2A12</b>	Aluminum	90gr	100kg/220lbs

Warning: Do not shorten overall length to less than 55mm



### Short Pylon With Receiver

With 4 tilt adjustment set screws and 30mm anodized aluminum alloy tube (250 x 30 x 2.35mm).

Part No	Alloy	Weight	Max Patient Weight
<b>2A16</b>	Aluminum	218gr	100kg/220lbs
<b>2S16</b>	S. Steel	261gr	136kg/300lbs
<b>2T16</b>	Titanium	218gr	136kg/300lbs



### Single Pylon No Adapter

400 x 30 x 2.35mm

Part No	Alloy	Weight	Max Patient Weight
<b>2A18</b>	Aluminum	242gr	136kg/300lbs

## TUBE CLAMP ADAPTERS



### Arched Sliding Tube Clamp Pyramid

Arched dovetail design offers adjustable angles, increasing lateral offset capability based on the pylon length. Use when more than 11mm lateral offset is needed.

Part No	Alloy	Build Height	Weight	Max Patient Weight
<b>3T88</b>	Titanium	57mm	158gr	136kg/300lbs



### Arched Sliding Tube Clamp Receiver

Arched dovetail design offers adjustable angles, increasing lateral offset capability based on the pylon length. Use when more than 11mm lateral offset is needed.

Part No	Alloy	Build Height	Weight	Max Patient Weight	
<b>3T87</b>	Titanium	62mm	149gr	136kg/300lbs	↷



### Arched Sliding Tube Clamp with Threaded Rotation

Tube clamp with 36mm threads. Arched dovetail design (4T50) offers adjustable angles, increasing lateral offset capability based on the pylon length. For use with 4 hole frame (3T90) or 3 arm lamination anchor (4S35).

Part No	Alloy	Weight	Max Patient Weight	
<b>4T55</b>	Titanium	125gr	136kg/300lbs	↷



### Heavy Duty Tube Clamp Receiver

Rated for patients up to 450 lbs. For 34mm tube. Includes 4 tilt adjustment screws and rotation set screw.

Part No	Alloy	Build Height	Weight	Max Patient Weight	
<b>2T23</b>	Titanium	47mm	75gr	205kg/450lbs	



### Sliding Tube Clamp Pyramid

Tube clamp adapter on one end and pyramid on the other. Slides in either direction allowing for custom lateral offset with 2 locking screws.

Part No	Alloy	Build Height	Weight	Max Patient Weight	
<b>3T86</b>	Titanium	54mm	158gr	136kg/300lbs	↔



### Sliding Tube Clamp Receiver

Tube clamp adapter on one end and pyramid receiver on the other. Slides in either direction allowing for custom lateral offset with 2 locking screws.

Part No	Alloy	Build Height	Weight	Max Patient Weight	
<b>3T85</b>	Titanium	61mm	149gr	136kg/300lbs	↔



## Tube Clamp Adapter

For 30mm tubes. Includes 1 rotation and 4 tilt adjustment set screws.

Part No	Alloy	Build Height	Weight	Max Patient Weight
<b>2A20</b>	Aluminum	47mm	68gr	100kg/220lbs
<b>2S20</b>	S. Steel	47mm	113gr	136kg/300lbs
<b>2T20</b>	Titanium	47mm	70gr	136kg/300lbs



## Tube Clamp Adapter (10°)

For 30mm tubes. Includes 1 rotation and 4 tilt adjustment set screws.

Part No	Alloy	Build Height	Weight	Max Patient Weight
<b>2T22</b>	Titanium	49mm	78gr	136kg/300lbs

## 4 HOLE ADAPTERS

### Pyramid With 4 Holes

Connector between socket and pylon, 8.2mm center hole.



Part No	Alloy	Build Height	Weight	Max Patient Weight
<b>3A10</b>	Aluminum	12mm	51gr	100kg/220lbs
<b>3S10</b>	S. Steel	12mm	84gr	136kg/300lbs
<b>3T10</b>	Titanium	12mm	50gr	136kg/300lbs

Connector between socket and pylon, 10mm center hole.

Part No	Alloy	Build Height	Weight	Max Patient Weight
<b>3T09</b>	Titanium	12mm	46gr	136kg/300lbs

### Pyramid With 4 Holes & Axial Offset

Connector between socket and pylon with pyramid set 8mm off from axis, 8.2mm center hole.



Part No	Alloy	Build Height	Weight	Max Patient Weight
<b>3S11</b>	S. Steel	12mm	108gr	136kg/300lbs
<b>3T11</b>	Titanium	12mm	60gr	136kg/300lbs

### Pyramid With 4 Holes & Diagonal Offset

Connector between socket and pylon with pyramid set 5mm off from axis, 8.2mm center hole.



Part No	Alloy	Build Height	Weight	Max Patient Weight
<b>3S12</b>	S. Steel	12mm	108gr	136kg/300lbs
<b>3T12</b>	Titanium	12mm	60gr	136kg/300lbs



### Receiver With 4 Holes

Connector between socket and pylon.

Part No	Alloy	Build Height	Weight	Max Patient Weight
<b>3A20</b>	Aluminum	17mm	40gr	100kg/220lbs
<b>3S20</b>	S. Steel	17mm	102gr	136kg/300lbs
<b>3T20</b>	Titanium	17mm	65gr	136kg/300lbs



### Rotatable pyramid adapter with 4 holes axial offset

Socket to pylon connector with threaded rotation.

Part No	Alloy	Weight	Max Patient Weight	
<b>3T25</b>	Titanium	109gr	136kg/300lbs	



### Rotatable pyramid adapter with 4 holes diagonal offset

Socket to pylon connector with threaded rotation.

Part No	Alloy	Weight	Max Patient Weight	
<b>3T24</b>	Titanium	109gr	136kg/300lbs	



### Rotatable pyramid receiver with 4 holes axial offset

Socket to pylon connector with threaded rotation. Single screw rotation set and 4-M8x12 stainless steel angular adjustment socket set screws.

Part No	Alloy	Weight	Max Patient Weight	
<b>3T27</b>	Titanium	127gr	136kg/300lbs	



### Rotatable pyramid receiver with 4 holes diagonal offset

Socket to pylon connector with threaded rotation. Single screw rotation set and 4 M8x12 stainless steel angular adjustment socket set screws.

Part No	Alloy	Weight	Max Patient Weight	
<b>3T26</b>	Titanium	127gr	136kg/300lbs	

## Rotating Pyramid With 4 Holes

Socket to pylon connector with threaded rotation. Eliminates the use of pressure plates and sets rotation with one screw. Center pin hole diameter is 8.2mm.



Part No	Alloy	Build Height	Weight	Max Patient Weight	
<b>3A18</b>	Aluminum	17mm	99gr	100kg/220lbs	↻
<b>3S18</b>	S. Steel	17mm	124gr	136kg/300lbs	↻
<b>3T18</b>	Titanium	17mm	71gr	136kg/300lbs	↻

Center hole 10mm.

Part No	Alloy	Build Height	Weight	Max Patient Weight	
<b>3T19</b>	Titanium	17mm	71gr	136kg/300lbs	↻

## Rotating Receiver With 4 Holes

Rotatable connector between socket and pylon. Threaded rotation allows rotation set with one screw.



Part No	Alloy	Build Height	Weight	Max Patient Weight	
<b>3A23</b>	Aluminum	21mm	74gr	100kg/220lbs	↻
<b>3S23</b>	S. Steel	21mm	130gr	136kg/300lbs	↻
<b>3T23</b>	Titanium	21mm	80gr	136kg/300lbs	↻

## Rotating Sliding Pyramid With 4 Holes

Pyramid on one end and 4 hole frame (3T90) on the other. Slides in either direction allowing for custom lateral offset with 2 locking screws.



Part No	Alloy	Build Height	Weight	Max Patient Weight	
<b>3T30</b>	Titanium	28mm	154gr	136kg/300lbs	↻ ↔

Pyramid on one end and 4 hole frame (3T90) on the other. Arched dovetail design offers adjustable angles, increasing lateral offset capability based on the pylon length. Use when more than 11mm lateral offset is needed.

Part No	Alloy	Build Height	Weight	Max Patient Weight	
<b>3T31</b>	Titanium	31mm	154gr	136kg/300lbs	↻ ↷

## Rotating Sliding Receiver With 4 Holes

Pyramid receiver on one end and 4 hole frame (3T90) on the other. Slides in either direction allowing for custom lateral offset with 2 locking screws.



Part No	Alloy	Build Height	Weight	Max Patient Weight	
<b>3T35</b>	Titanium	37mm	152gr	136kg/300lbs	↻ ↔

Pyramid receiver on one end and 4 hole frame (3T90) on the other. Arched dovetail design offers adjustable angles, increasing lateral offset capability based on the pylon length. Use when more than 11mm lateral offset is needed.

Part No	Alloy	Build Height	Weight	Max Patient Weight	
<b>3T36</b>	Titanium	38mm	152gr	136kg/300lbs	↻ ↷

# 4 PRONG ADAPTERS

## Pyramid With 4 Prongs

Connector between socket and pylon lamination. Rough machined prongs for improved lamination bonding. Includes rubber lamination dummy (not included in weight) 6.2mm center hole.



Part No	Alloy	Build Height	Weight	Max Patient Weight
<b>3A14</b>	Aluminum	9mm	52gr	100kg/220lbs
<b>3S14</b>	S. Steel	9mm	107gr	136kg/300lbs
<b>3T13</b>	Titanium	10mm	62gr	136kg/300lbs
<b>3T14</b>	Titanium	9mm	52gr	136kg/300lbs

## Receiver With 4 Prongs

Ideal for long stumps. Includes 4 stainless steel angular adjustment screws (flat head).



Part No	Alloy	Build Height	Weight	Max Patient Weight
<b>3S17</b>	S. Steel	14mm	92gr	136kg/300lbs
<b>3T17</b>	Titanium	14mm	56gr	136kg/300lbs

## Rotating Pyramid With 4 Prongs

A problem solver for situations where there is limited space due to stump length or high profile foot, these 4 prong lamination adapters allow for axial rotation adjustment. 8.2mm center hole.



Part No	Alloy	Build Height	Weight	Max Patient Weight	
<b>3T15</b>	Titanium	19mm	92gr	136kg/300lbs	

## Rotating Receiver With 4 Prongs

A problem solver for situations where there is limited space due to stump length or high profile foot, these 4 prong lamination adapters allow for axial rotation adjustments.



Part No	Alloy	Build Height	Weight	Max Patient Weight	
<b>3T16</b>	Titanium	28mm	101gr	136kg/300lbs	



# DOUBLE HEAD ADAPTERS



## Double Head Pyramid

Connector between receivers.

Part No	Alloy	Build Height	Weight	Max Patient Weight
<b>3S70</b>	S. Steel	13mm	109gr	136kg/300lbs
<b>3T70</b>	Titanium	13mm	60gr	136kg/300lbs

## Double Head Rotating Receiver & Pyramid

Created for use when distance is a problem and conventional double head adapters do not solve issues requiring rotation of components. To modify the angle of the socket and pylon, this double-head receiver rotates to make final adjustments for correct toe out and knee directions. Easy-access set screws lock the adapter at desired position.



Part No	Alloy	Build Height	Weight	Max Patient Weight	
<b>3T61</b>	Titanium	42mm	117gr	136kg/300lbs	↻

Offering a pyramid on one end and receiver on the other. Used for minimal stump to floor distances, this adapter rotates for final socket adjustment on the pylon to correct toe out and knee directions. Safety locked at desired position using easy-access rotation set screws.

Part No	Alloy	Build Height	Weight	Max Patient Weight	
<b>3T63</b>	Titanium	34mm	104gr	136kg/300lbs	↻

## Double Head Rotating Sliding Pyramid

Rotatable pyramid on one end and receiver on the other with an overall height of 47mm. Slides in either direction allowing for custom lateral offset with 2 locking screws.



Part No	Alloy	Build Height	Weight	Max Patient Weight	
<b>3T83</b>	Titanium	47mm	193gr	136kg/300lbs	↻ ↔

Rotatable pyramid on one end and receiver on the other with an overall height of 48mm. Arched dovetail design offers adjustable angles, increasing lateral offset capability based on the pylon length. Use when more than 11mm lateral offset is needed.

Part No	Alloy	Build Height	Weight	Max Patient Weight	
<b>3T96</b>	Titanium	48mm	193gr	136kg/300lbs	↻ ↷

## Double Head Sliding Receiver & Pyramid

Pyramid on one end and receiver on the other. Slides in either direction allowing for custom lateral offset with 2 locking screws.



Part No	Alloy	Build Height	Weight	Max Patient Weight	
<b>3T81</b>	Titanium	35mm	157gr	136kg/300lbs	↔

Pyramid on one end and receiver on the other. Arched dovetail design (3T99) offers adjustable angles, increasing lateral offset capability based on the pylon length. Overall height of 37mm.

Part No	Alloy	Build Height	Weight	Max Patient Weight	
<b>3T99</b>	Titanium	37mm	157gr	136kg/300lbs	↷

## Double Head Receiver

Connector between two pyramid adapters. Includes 8 stainless steel angular adjustment screws. Allows better adjustment for long stumps and reduces weight.



Part No	Alloy	Build Height	Weight	Max Patient Weight
<b>3A50</b>	Aluminum	32mm	65gr	100kg/220lbs
<b>3A51</b>	Aluminum	45mm	80gr	100kg/220lbs
<b>3A52</b>	Aluminum	60mm	94gr	100kg/220lbs
<b>3A53</b>	Aluminum	75mm	112gr	100kg/220lbs
<b>3S50</b>	S. Steel	32mm	135gr	136kg/300lbs
<b>3S51</b>	S. Steel	45mm	156gr	136kg/300lbs
<b>3S52</b>	S. Steel	60mm	179gr	136kg/300lbs
<b>3S53</b>	S. Steel	75mm	197gr	136kg/300lbs
<b>3T50</b>	Titanium	32mm	88gr	136kg/300lbs
<b>3T51</b>	Titanium	45mm	98gr	136kg/300lbs
<b>3T52</b>	Titanium	60mm	110gr	136kg/300lbs
<b>3T53</b>	Titanium	75mm	120gr	136kg/300lbs

## Double Head Receiver and Pyramid

For connection between a pyramid and receiver with adjustment screws. Allows changing the angles at the distal and proximal ends.



Part No	Alloy	Build Height	Weight	Max Patient Weight
<b>3A60</b>	Aluminum	32mm	65gr	100kg/220lbs
<b>3S60</b>	S. Steel	32mm	124gr	136kg/300lbs
<b>3T60</b>	Titanium	32mm	76gr	136kg/300lbs

## Doan's Double Head Rotating Receiver

Created for use when distance is a problem and conventional double head adapters do not solve issues requiring rotation of components. To modify the angle of the socket and pylon, this double-head receiver rotates to make final adjustments for correct toe out and knee directions. Easy-access set screws lock the adapter at desired position.



Part No	Alloy	Build Height	Weight	Max Patient Weight	Build Height (MIN)	Build Height (MAX)	
<b>3T54</b>	Titanium	34mm	114gr	136kg/300lbs	34mm	34mm	↻
<b>3T55</b>	Titanium	42mm	129gr	136kg/300lbs	42mm	42mm	↻
<b>3T56</b>	Titanium	53mm	143gr	136kg/300lbs	53mm	53mm	↻
<b>3T57</b>	Titanium	66mm	156gr	136kg/300lbs	66mm	66mm	↻

## Double Head Rotating Receiver With Height Adjustment

With an overall height in the shortest position at 50mm, this adapter allows the practitioner to set a custom height.



Part No	Alloy	Build Height	Weight	Max Patient Weight	Build Height (MIN)	Build Height (MAX)	
<b>3T65</b>	Titanium	57mm	158gr	136kg/300lbs	51mm	57mm	↻ ↑

With an overall height in the shortest position at 58mm, this adapter allows the practitioner to set a custom height.

Part No	Alloy	Build Height	Weight	Max Patient Weight	Build Height (MIN)	Build Height (MAX)	
<b>3T66</b>	Titanium	61mm	172gr	136kg/300lbs	57mm	61mm	↻ ↑

## Double Head Rotating Sliding Receiver

Both end pyramid receiver with slide and rotation and an overall height of 52mm. Slides in either direction allowing for custom lateral offset with 2 locking screws.



Part No	Alloy	Build Height	Weight	Max Patient Weight	
<b>3T82</b>	Titanium	52mm	192gr	136kg/300lbs	↻ ↔

Both end pyramid receiver with slide and rotation and an overall height of 55mm. Arched dovetail design offers adjustable angles, increasing lateral offset capability based on the pylon length. Use when more than 11mm lateral offset is needed.

Part No	Alloy	Build Height	Weight	Max Patient Weight	
<b>3T95</b>	Titanium	55mm	192gr	136kg/300lbs	↻ ↷

## Double Head Sliding Receiver

Both end receiver. Slides in either direction, allowing for custom lateral offset.



Part No	Alloy	Build Height	Weight	Max Patient Weight	
<b>3T80</b>	Titanium	43mm	157gr	136kg/300lbs	↔

Both end receiver. Arched dovetail design (3T98) provides adjustable angles, increasing lateral offset capability based on the pylon length. Use when more than 11mm lateral offset is needed. Overall height 44mm.

Part No	Alloy	Build Height	Weight	Max Patient Weight	
<b>3T98</b>	Titanium	44mm	157gr	136kg/300lbs	↷

## LAMINATION ANCHORS

### 3 Arm A/K Lamination Anchor With Pyramid

For both A/K exoskeletal socket or thermoplastic frame lamination.



Part No	Alloy	Build Height	Weight	Max Patient Weight
<b>4S20</b>	S. Steel	15mm	125gr	136kg/300lbs



### 3 Arm A/K Lamination Anchor With Rotating Pyramid

For both A/K exoskeletal socket or thermoplastic frame lamination.

Part No	Alloy	Build Height	Weight	Max Patient Weight	
<b>4S40</b>	S. Steel	17mm	175gr	136kg/300lbs	↻
<b>4ST8</b>	Titanium	17mm	150gr	136kg/300lbs	↻



### 3 Arm A/K Lamination Anchor With Rotating Receiver

For both A/K exoskeletal socket or thermoplastic frame lamination.

Part No	Alloy	Build Height	Weight	Max Patient Weight	
<b>4S30</b>	S. Steel	21mm	184gr	136kg/300lbs	↻
<b>4ST6</b>	Titanium	21mm	160gr	136kg/300lbs	↻



### 3 Arm A/K Lamination Anchor With Rotating Sliding Pyramid

With sliding and rotating titanium pyramid tip. Maximum slide of 11mm either direction.

Part No	Alloy	Build Height	Weight	Max Patient Weight	
<b>4T41</b>	Titanium	28mm	229gr	136kg/300lbs	↻ ↔



### 3 Arm A/K Lamination Anchor With Rotating Sliding Receiver

With sliding and rotating titanium 4 screw receiver tip. Maximum slide of 11mm either direction.

Part No	Alloy	Build Height	Weight	Max Patient Weight	
<b>4T31</b>	Titanium	27mm	228gr	136kg/300lbs	↻ ↔



### 3 Arm Lamination Anchor Only

Arched dovetail design (4T50) offers adjustable angles, increasing lateral offset capability based on the pylon length. For use with 4 hole frame (3T90) or 3 arm lamination anchor (4S35).

Part No	Alloy	Build Height	Weight	Max Patient Weight	
<b>4S35</b>	S. Steel	9mm	109gr	136kg/300lbs	

# SHUTTLE LOCKS

## 4 Hole Mounting Shuttle Lock



Ideal in situations where space is very critical for pylon height. Aluminum body with titanium pyramid, adjustable release button. Locking mechanism is placed inside the pyramid dome. Build height is 29mm and the weight includes pin, inner retainer and pyramid as a set.

Part No	Alloy	Weight	Max Patient Weight
<b>4A25</b>	Aluminum	99gr	100kg/220lbs



Ideal in situations where space is very critical for pylon height. Includes titanium body with titanium pyramid, adjustable release button and 4 hole frame with threaded rotation. Locking mechanism is placed inside the pyramid dome reducing build height to 32mm. Weight includes pin, inner retainer and pyramid as a set.

Part No	Alloy	Weight	Max Patient Weight
<b>4T25</b>	Titanium	184gr	136kg/300lbs



## 4 Prong Combination Shuttle Lock

Unique design combines many features needed for B/K and light-weight A/K cases. It eliminates the need for an inner socket retainer block, saves space on the length of the pylon and enables rotation adjustment. Dummy (included) makes for easy lamination. Product weights include pin and all other features except dummy.

Part No	Alloy	Weight	Max Patient Weight
<b>4T28</b>	Titanium	147gr	136kg/300lbs



## Screw Thread Shuttle Lock

For A/K or heavy use B/K situations, these shuttle locks are mounted on 3 arm stainless steel lamination anchors. The product weights listed include the anchor and pin.

Part No	Alloy	Weight	Max Patient Weight
<b>4T26</b>	Titanium	220gr	136kg/300lbs

## RIM SYSTEM SHUTTLE LOCKS

### RIM System Shuttle Lock

RIM System allows the Shuttle Lock to be installed inside the pyramid dome, thus reducing the build height significantly and cancelling the need for lamination dummy. 70mm RIM radius. RIM is constructed with aerospace grade aluminum with stainless steel rotation set screws while the pyramid dome and head is constructed of titanium. Shuttle lock inside the pyramid shell is Delrin thermoplastic with stainless steel catch and springs. Plastic push button can be cut to desired length or removed completely. 8mm pin is included.



Part No	Alloy	Weight	Max Patient Weight	
<b>4T20</b>	Titanium	200gr	136kg/300lbs	

RIM System allows the Shuttle Lock to be installed inside the pyramid dome, thus reducing the build height significantly and cancelling the need for lamination dummy. 63mm RIM radius. RIM is constructed with aerospace grade aluminum with stainless steel rotation set screws while the pyramid dome and head is constructed of titanium. Shuttle lock inside the pyramid shell is Delrin thermoplastic with stainless steel catch and springs. Plastic push button can be cut to desired length or removed completely. 8mm pin is included.

Part No	Alloy	Weight	Max Patient Weight	
<b>4T21</b>	Titanium	181gr	136kg/300lbs	

### RIM System Shuttle Lock with 1.5" pin

Integrated rotatable pyramid with corrosion resistant stainless steel pin and locking mechanism in Delrin housing. Includes 3 lamination dummy screws. Waterproof.



Part No	Alloy	Weight	Max Patient Weight	
<b>4A20</b>	Aluminum	160gr	136kg/300lbs	

## LAMINATION RIMS

### Lamination RIM With Rotating Pyramid

70mm RIM with Rotatable Pyramid. Includes 3 lamination dummy screws and 3 M8x12 stainless steel set screws.



Part No	Alloy	Build Height	Weight	Max Patient Weight	
<b>4AT3</b>	Titanium	23mm	122gr	136kg/300lbs	

63mm RIM with Rotatable Pyramid. Includes 3 lamination dummy screws and 3 M8x6 stainless steel set screws. 63mm RIM will help the distal end of the socket to form better around thin stumps allowing a better formed socket shape.

Part No	Alloy	Build Height	Weight	Max Patient Weight	
<b>4AT4</b>	Titanium	22mm	93gr	136kg/300lbs	

## Lamination RIM With Rotating Receiver



70mm RIM with Rotatable Pyramid Receiver. Includes 3 lamination dummy screws 4 M8x12 and 3 M8x12 stainless steel set screws.

Part No	Alloy	Build Height	Weight	Max Patient Weight	
<b>4AT1</b>	Titanium	27mm	117gr	136kg/300lbs	

63mm RIM with Rotatable Pyramid Receiver. Includes 3 lamination dummy screws 4 M8x12 and 3 M8x6 stainless steel set screws.

Part No	Alloy	Build Height	Weight	Max Patient Weight	
<b>4AT2</b>	Titanium	26mm	99gr	136kg/300lbs	

## Lamination RIM With Rotating Sliding Pyramid



70mm RIM and Rotatable Pyramid with Slide. Includes 3 lamination dummy screws and 3 M8x12 stainless steel set screws.

Part No	Alloy	Build Height	Weight	Max Patient Weight	
<b>4AT5</b>	Titanium	34mm	197gr	136kg/300lbs	

63mm RIM and Rotatable Pyramid with Slide. Includes 3 lamination dummy screws and 3 M8x6 stainless steel set screws.

Part No	Alloy	Build Height	Weight	Max Patient Weight	
<b>4AT6</b>	Titanium	33mm	183gr	136kg/300lbs	

## Lamination RIM With Rotating Sliding Receiver



70mm RIM and Rotatable Pyramid Receiver with Slide. Includes 3 lamination dummy screws 4 M8x12 and 3 M8x12 stainless steel set screws.

Part No	Alloy	Build Height	Weight	Max Patient Weight	
<b>4AT7</b>	Titanium	43mm	196gr	136kg/300lbs	

63mm RIM and Rotatable Pyramid Receiver with Slide. Includes 3 lamination dummy screws 4 M8x12 and 3 M8x6 stainless steel set screws.

Part No	Alloy	Build Height	Weight	Max Patient Weight	
<b>4AT8</b>	Titanium	42mm	178gr	136kg/300lbs	

## KNEE JOINTS

### Modular Single Axis Knee Joint

With stance control, constant friction and extension assist. For above knee amputees. Connection of the upper joint to the swing axis and connection of the lower joint to the knee axis creates a functional load dependent brake. Recommended for amputees with lower and moderate functional levels. Includes extension assist cable, compression springs, distal anchor shell, and adjustment ring.



Part No	Alloy	Weight	Max Patient Weight
<b>5S40</b>	S. Steel	525gr	100kg/220lbs
<b>5T40</b>	Titanium	349gr	100kg/220lbs

With lock and internal extension assist. For above knee amputees. Upper and lower joints are connected through the knee axis by a bushing. The adjustable lock secures the knee in extension and the lock is released using the cable. Internal spring extension assist provides automatic locking of the knee at full extension. It helps control swing phase and has a high stance stability. Recommended for amputees with lower functional levels.



Part No	Alloy	Weight	Max Patient Weight
<b>5S50</b>	S. Steel	525gr	100kg/220lbs
<b>5T50</b>	Titanium	385gr	100kg/220lbs

## ROTATING TIPS

### Rotating Pyramid Tip

Pyramid insert with 36mm threads.



Part No	Alloy	Build Height	Weight	Max Patient Weight	
<b>4T09</b>	Titanium	8mm	38gr	136kg/300lbs	
<b>4T10</b>	Titanium	10mm	44gr	136kg/300lbs	
<b>4T11</b>	Titanium	12mm	48gr	136kg/300lbs	

### Rotating Receiver Tip

4 screw receiver insert with 36mm threads.



Part No	Alloy	Build Height	Weight	Max Patient Weight	
<b>4T08</b>	Titanium	12mm	48gr	136kg/300lbs	





### Rotating Sliding Pyramid Tip

Pyramid on one end and 36mm threads on the other. Slides in either direction allowing for custom lateral offset with 2 locking screws.

Part No	Alloy	Build Height	Weight	Max Patient Weight	
<b>4T14</b>	Titanium	19mm	122gr	136kg/300lbs	↔

Pyramid on one end and 36mm threads on the other. Arched dovetail design offers adjustable angles, increasing lateral offset capability based on the pylon length. For use with 4 hole frame (3T90) or 3 arm lamination anchor (4S35).

Part No	Alloy	Build Height	Weight	Max Patient Weight	
<b>4T50</b>	Titanium	22mm	122gr	136kg/300lbs	↪



### Rotating Sliding Receiver Tip

Receiver on one end and 36mm threads on the other. Slides in either direction allowing for custom lateral offset with 2 locking screws.

Part No	Alloy	Build Height	Weight	Max Patient Weight	
<b>4T15</b>	Titanium	28mm	120gr	136kg/300lbs	↔

Receiver on one end and 36mm threads on the other. Arched dovetail design offers adjustable angles, increasing lateral offset capability based on the pylon length. For use with 4 hole frame (3T90) or 3 arm lamination anchor (4S35).

Part No	Alloy	Build Height	Weight	Max Patient Weight	
<b>4T51</b>	Titanium	29mm	120gr	136kg/300lbs	↪

## ROTATING FRAMES



### 4 Hole Rotating Frame Only

An individual 4 hole rotation frame with clamp screw.

Part No	Alloy	Build Height	Weight	Max Patient Weight	
<b>3T90</b>	Titanium	9mm	33gr	136kg/300lbs	↻

## CONNECTORS & COUPLINGS



### Connector Plate

Part No	Alloy	Build Height	Weight	Max Patient Weight	
<b>4A80</b>	Aluminum	10mm	70gr	136kg/300lbs	



## Coupling

4A65 is a lamination connector coupling for conventional laminated sockets.

Part No	Alloy	Build Height	Weight	Max Patient Weight
<b>4A65</b>	Aluminum	24mm	75gr	136kg/300lbs

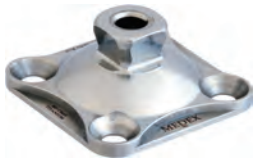
## PEDIATRIC COMPONENTS

### Child Pylon With Receiver



With 4 M6 tilt adjustment set screws and 22mm anodized aluminum alloy tube. (300 x 22 x 2mm).

Part No	Alloy	Build Height	Weight	Max Patient Weight
<b>2CT6</b>	Titanium	300mm	113gr	80kg/175lbs



### Child Pyramid With 4 Holes

Connector between socket and pylon, 6.5mm center hole.

Part No	Alloy	Build Height	Weight	Max Patient Weight
<b>3CT5</b>	Titanium	10mm	26gr	80kg/175lbs



### Child SACH Foot Adapter

Child sized connector between SACH Energy Storing Foot and pylon. Includes stainless steel bolt, lock washer, and flat washer.

Part No	Alloy	Weight	Max Patient Weight
<b>2CT5</b>	Titanium	62gr	80kg/175lbs



### Child Sliding Tube Clamp Pyramid


Child sized tube clamp adapter on one end and pyramid on the other. Slides in either direction allowing for custom lateral offset with 2 locking screws.

Part No	Alloy	Weight	Max Patient Weight	
<b>4CT9</b>	Titanium	93gr	80kg/175lbs	



### Child Tube Clamp Adapter

For 22mm tubes. Includes 1 rotation and 4 M6 tilt adjustment set screws.

Part No	Alloy	Build Height	Weight	Max Patient Weight	
<b>2CT7</b>	Titanium	34mm	40gr	80kg/175lbs	



## Child Double Head Receiver

Connector between two pyramid adapters. Includes 8 M6 stainless steel angular adjustment screws. Allows better adjustment for long stumps and reduces weight.

Part No	Alloy	Build Height	Weight	Max Patient Weight
<b>3CT6</b>	Titanium	22mm	44gr	80kg/175lbs
<b>3CT7</b>	Titanium	32mm	51gr	80kg/175lbs
<b>3CT8</b>	Titanium	45mm	60gr	80kg/175lbs
<b>3CT9</b>	Titanium	60mm	70gr	80kg/175lbs



## Child Double Head Rotating Receiver


For use in situations when distance is a problem and conventional double head adapters do not solve issues requiring rotation of components. To modify the angle of the socket and pylon, this double-head receiver rotates to make final adjustments for correct toe out and knee directions. Easy-access set screws lock the adapter at the desired position. Includes 8 M6 tilt adjustment set screws.

Part No	Alloy	Build Height	Weight	Max Patient Weight	
<b>3CT1</b>	Titanium	26mm	69gr	80kg/175lbs	
<b>3CT2</b>	Titanium	37mm	79gr	80kg/175lbs	
<b>3CT3</b>	Titanium	48mm	88gr	80kg/175lbs	
<b>3CT4</b>	Titanium	60mm	94gr	80kg/175lbs	



## Child Rotating Pyramid With 4 Holes

Socket to pylon connector with threaded rotation. Eliminates the use of pressure plates and sets rotation with one screw.

Part No	Alloy	Weight	Max Patient Weight	
<b>3TC1</b>	Titanium	44gr	80kg/175lbs	



## Double Head Pyramid to Pediatric Converter

One end pediatric pyramid and the other end adult four screw pyramid receiver. Converts adult pyramid to pediatric pyramid.

Part No	Alloy	Build Height	Weight	Max Patient Weight
<b>4CT3</b>	Titanium	15mm	65gr	80kg/175lbs



### Child Double Head Arched Sliding Receiver

Double ended receiver. Arched dovetail design provides adjustable angles, increasing lateral offset capability based on the pylon length. Safety locked at desired position using 2 easy-access rotation set screws. Includes 8 M6 tilt adjustment set screws. Overall height 37mm.

Part No	Alloy	Build Height	Weight	Max Patient Weight	
<b>4CT7</b>	Titanium	38mm	116gr	80kg/175lbs	



### Child Double Head Arched Sliding Receiver & Pyramid

Pyramid on one end and receiver on the other. Arched dovetail design offers adjustable angles, increasing lateral offset capability based on the pylon length. Safety locked at desired position using 2 easy-access rotation set screws. Includes 4 M6 tilt adjustment set screws. Overall height 42mm.

Part No	Alloy	Build Height	Weight	Max Patient Weight	
<b>4CT8</b>	Titanium	34mm	121gr	80kg/175lbs	



### Child Double Head Rotating Receiver & Pyramid

Offers a pyramid on one end and receiver on the other. Used for minimal stump to floor distances, this adapter rotates for final socket adjustment on the pylon to correct toe out and knee directions. Safety locked at desired position using 3 easy-access rotation set screws. Includes 4 M6 tilt adjustment set screws.

Part No	Alloy	Build Height	Weight	Max Patient Weight	
<b>4CT1</b>	Titanium		66gr	80kg/175lbs	
<b>4CT2</b>	Titanium	30mm	72gr	80kg/175lbs	



### Child Rotating Receiver With 4 Holes

Child sized rotatable connector between socket and pylon. Threaded rotation allows rotation set with one screw.

Part No	Alloy	Weight	Max Patient Weight	
<b>3TC2</b>	Titanium	51gr	80kg/175lbs	



### Child 3 Arm A/K Lamination Anchor With Rotating Pyramid

For both A / K Exoskeletal Socket or Thermoplastic frame lamination.

Part No	Alloy	Build Height	Weight	Max Patient Weight	
<b>4TC2</b>	Titanium	20mm	108gr	80kg/175lbs	



### Child 3 Arm A/K Lamination Anchor With Rotating Receiver

For both A / K Exoskeletal Socket or Thermoplastic frame lamination.

Part No	Alloy	Build Height	Weight	Max Patient Weight	
<b>4TC1</b>	Titanium	26mm	116gr	80kg/175lbs	



### Child Connector Plate

Part No	Alloy	Weight	Max Patient Weight
<b>4TC7</b>	Titanium	116gr	80kg/175lbs



### Child Lamination RIM With Rotating Pyramid

Part No	Alloy	Weight	Max Patient Weight	
<b>4TC5</b>	Titanium	66gr	80kg/175lbs	



### Child Lamination RIM With Rotating Receiver

Part No	Alloy	Weight	Max Patient Weight	
<b>4TC6</b>	Titanium	72gr	80kg/175lbs	